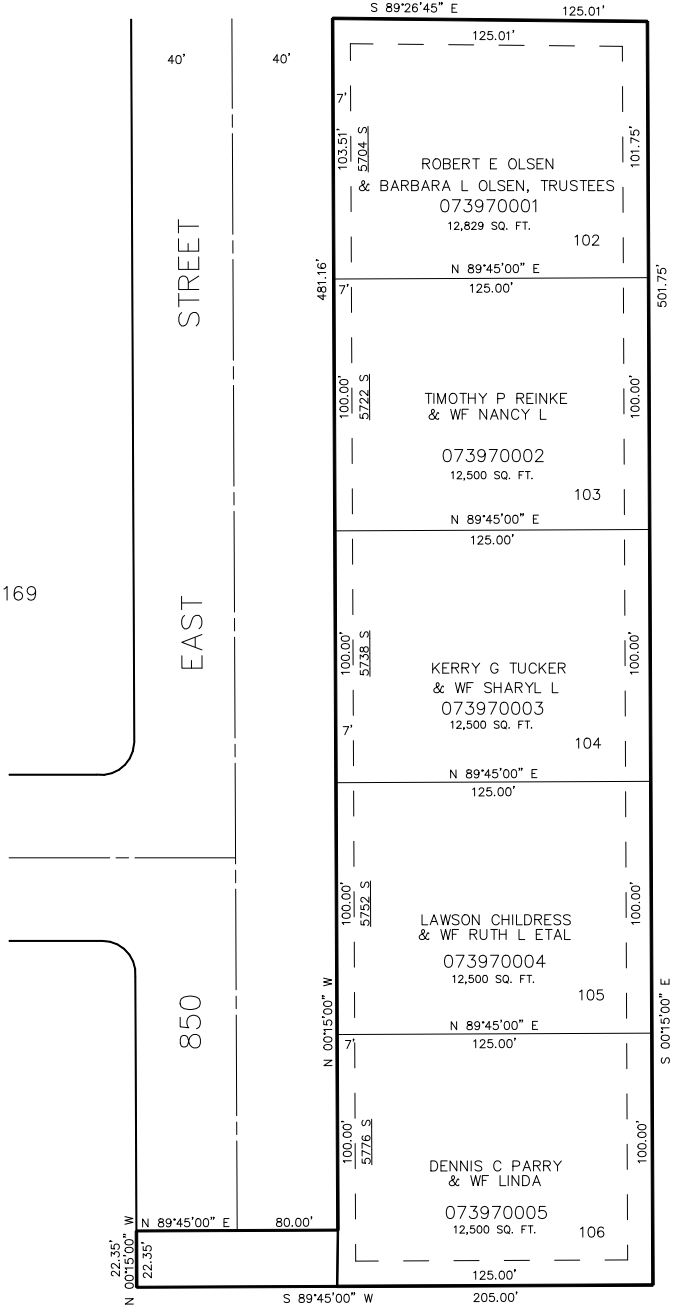


PART OF THE N.E. 1/4 OF SECTION 21, T.5N., R.1W., S.L.B. & M.  
**PLEASANT VALLEY ESTATES SUBDIVISION PHASE 11**

TAXING UNIT: 27

IN SOUTH OGDEN CITY  
 SCALE 1" = 40'  
 SEE PAGE 299

5700 SO. ST.



SEE PAGE 169

SEE PAGE 80-1

10' UTILITY & DRAINAGE EASEMENTS EACH SIDE OF PROPERTY LINES AS INDICATED BY DASHED LINES EXCEPT AS OTHERWISE SHOWN.

FOR COMPLETE ENG DATA SEE ORIGINAL DEDICATION PLAT IN BOOK 34, PAGE 5 OF RECORDS.

SEE PAGE 80-1